



# CHIMES

## GREENHILLS



## CHIMES GREENHILLS

### AFFORDABLE AFFLUENCE IN ANNAPOLIS

Hear the sounds of class and harmony at **Chimes Greenhills**. Located along Annapolis Street in Greenhills, **Chimes** offers an affordable alternative to living in a prominent Metro Manila address.

HLURB TLTS # ENCRFO-14-04-012



**ROBINSONS LAND**  
RESIDENTIAL DIVISION

We Are Home.

DISCLAIMER: All plans, specifications, and illustrations contained herein are for identification and reference only. While every care has been taken in preparation of this material, all details are subject to change without prior notice and do not constitute part of any offer or contract. The developer does not authorize the person to render any representation or warranty regarding this project. Sales agents are not authorized to make statements outside this material.

**ROBINSONS**  
**COMMUNITIES**  
*Affordable quality condos*





## CHIRPS AND CHARMS

Listen to the elements that entice you to Chimes.

*A tinkling tune of opportunity.* Seize the exciting opportunity of owning a Greenhills property.

*A ring of retail therapy.* Put yourself within walking distance from the Greenhills Shopping Center.

*A touch of prestige playing.* Watch the Summit hotel in Chimes and prestige to the Development.

Nearby commercial areas:

- Greenhills Shopping Center
- Robinsons Galleria
- Robinsons Magnolia

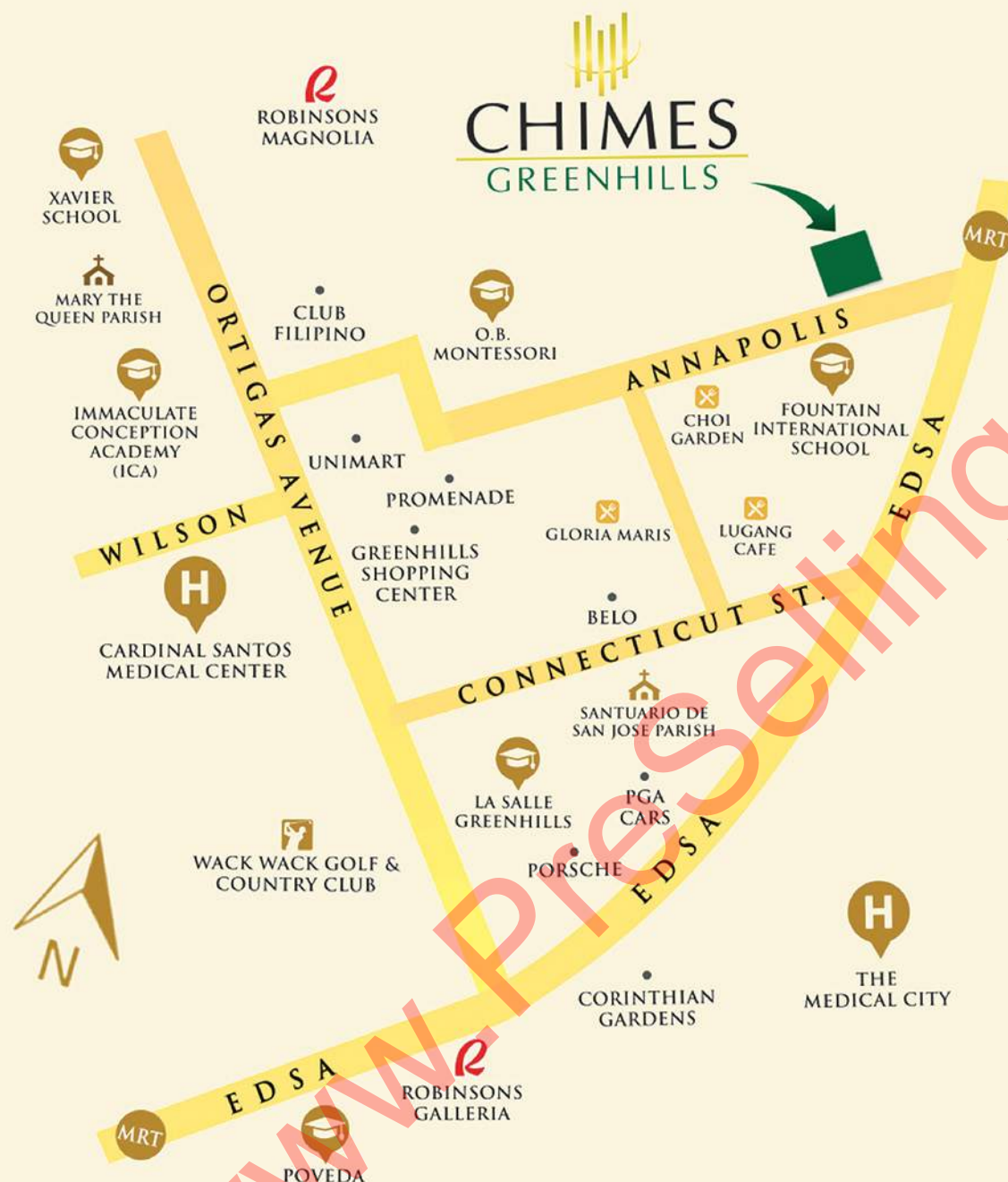
Nearby academic institutions:

- Xavier School
- Immaculate Conception Academy
- O.B. Montessori
- La Salle Greenhills
- Saint Pedro Poveda College

Nearby medical facilities:

- Cardinal Santos Medical Center
- The Medical City

Cardinal Santos Medical Center



**ROBINSONS LAND**  
RESIDENTIAL DIVISION

We Are Home.

**DISCLAIMER:** All plans, specifications, and illustrations contained herein are for identification and reference only. While every care has been taken in preparation of this material, all details are subject to change without prior notice and do not constitute part of any offer or contract. The developer does not authorize the person to render any representation or warranty regarding this project. Sales agents are not authorized to make statements outside this material.

**ROBINSONS**  
**COMMUNITIES**  
Affordable quality condos





## SITE DEVELOPMENT

### *A Steady Cadence*

Land Area : 1,129.00 sqm

Number of towers : 1 High-Rise Tower

Number of residential units : 372 units

Number of residential floors : 24 floors



**ROBINSONS LAND**  
RESIDENTIAL DIVISION

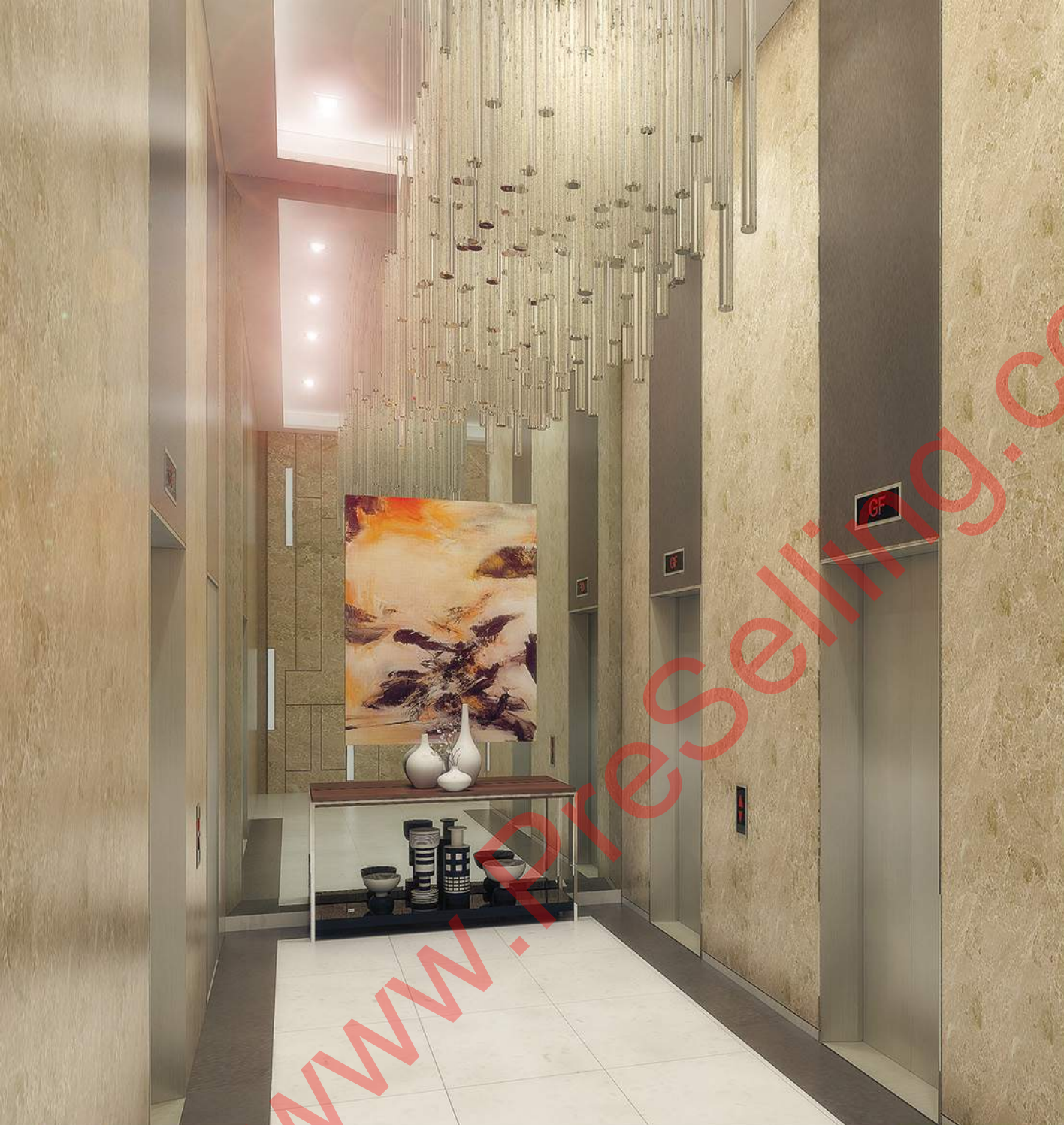
*We Are Home.*

DISCLAIMER: All plans, specifications, and illustrations contained herein are for identification and reference only. While every care has been taken in preparation of this material, all details are subject to change without prior notice and do not constitute part of any offer or contract. The developer does not authorize the person to render any representation or warranty regarding this project. Sales agents are not authorized to make statements outside this material.

**ROBINSONS**  
**COMMUNITIES**  
*Affordable quality condos*







#### THEME / ARCHITECTURAL DESIGN

Consistent with the development's name, rods of chimes inspire the tower's design. A stream facade with glass and natural stone translates this to create a Zen atmosphere promoted by wind chimes.



**ROBINSONS LAND**  
RESIDENTIAL DIVISION

We Are Home.

DISCLAIMER: All plans, specifications, and illustrations contained herein are for identification and reference only. While every care has been taken in preparation of this material, all details are subject to change without prior notice and do not constitute part of any offer or contract. The developer does not authorize the person to render any representation or warranty regarding this project. Sales agents are not authorized to make statements outside this material.

**ROBINSONS**  
**COMMUNITIES**  
*Affordable quality condos*



#### BUILDING FACILITIES / SERVICES

- Main Entrance lobby with reception
- CCTV monitoring on selected common areas
- Water is supplied by an elevated water tank and cistern
- Standby power generator
- Standby power at selected outlets and lighting fixtures in residential units
- Individual mail boxes at the ground floor
- Centralized garbage holding room
- Garbage holding area per residential floor
- Building administration office
- Security room
- Common drying cage at roof deck
- Transformer and genset room
- Sewage treatment plant located below basement 3
- Two fire exit stairs with well-lit signage conforming to the Fire Code of the Philippines



**ROBINSONS LAND**  
RESIDENTIAL DIVISION

We Are Home.

DISCLAIMER: All plans, specifications, and illustrations contained herein are for identification and reference only. While every care has been taken in preparation of this material, all details are subject to change without prior notice and do not constitute part of any offer or contract. The developer does not authorize the person to render any representation or warranty regarding this project. Sales agents are not authorized to make statements outside this material.

**ROBINSONS**  
**COMMUNITIES**  
*Affordable quality condos*





#### PROJECT DESIGNER

Architect Jonathan O. Gan & Associates



**ROBINSONS LAND**  
RESIDENTIAL DIVISION

We Are Home.

DISCLAIMER: All plans, specifications, and illustrations contained herein are for identification and reference only. While every care has been taken in preparation of this material, all details are subject to change without prior notice and do not constitute part of any offer or contract. The developer does not authorize the person to render any representation or warranty regarding this project. Sales agents are not authorized to make statements outside this material.

**ROBINSONS**  
**COMMUNITIES**  
*Affordable quality condos*







## UNIT OPTIONS

### Unit Type

Studio	Approx. 21.7 - 33.7 sqm
1 Bedroom	Approx. 38.6 sqm
2 Bedroom	Approx. 43.9 - 86.3 sqm
3 Bedroom	Approx. 109.2 - 125.6 sqm



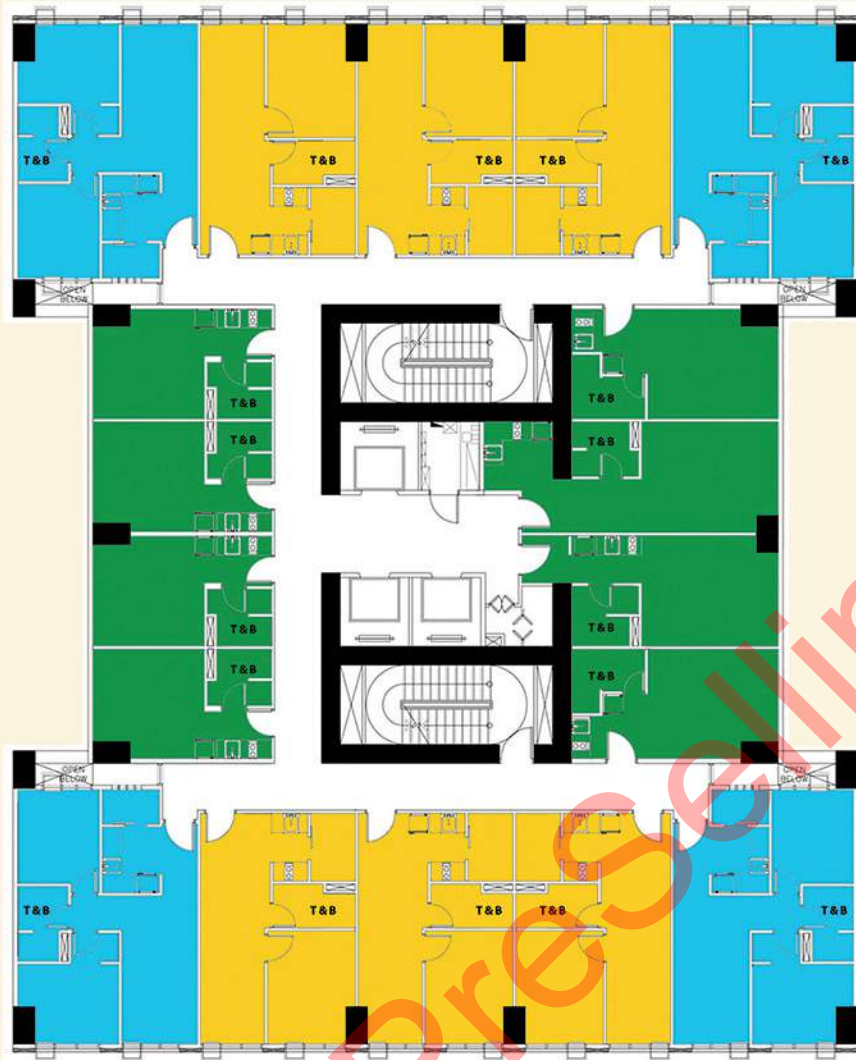
**ROBINSONS LAND**  
RESIDENTIAL DIVISION

We Are Home.

DISCLAIMER: All plans, specifications, and illustrations contained herein are for identification and reference only. While every care has been taken in preparation of this material, all details are subject to change without prior notice and do not constitute part of any offer or contract. The developer does not authorize the person to render any representation or warranty regarding this project. Sales agents are not authorized to make statements outside this material.

**ROBINSONS**  
**COMMUNITIES**  
Affordable quality condos





**UNITS PER FLOOR - 18**

	<b>STUDIO</b>	<b>8</b>
	Approx. 21.72 - 33.67 sqm	
	<b>1 - BEDROOM</b>	<b>6</b>
	Approx. 38.57 - 38.59 sqm	
	<b>2 - BEDROOM</b>	<b>4</b>
	Approx. 43.88 - 73.26 sqm	

**TYPICAL FLOOR PLAN**

Low Zone

17th to 33rd Floor



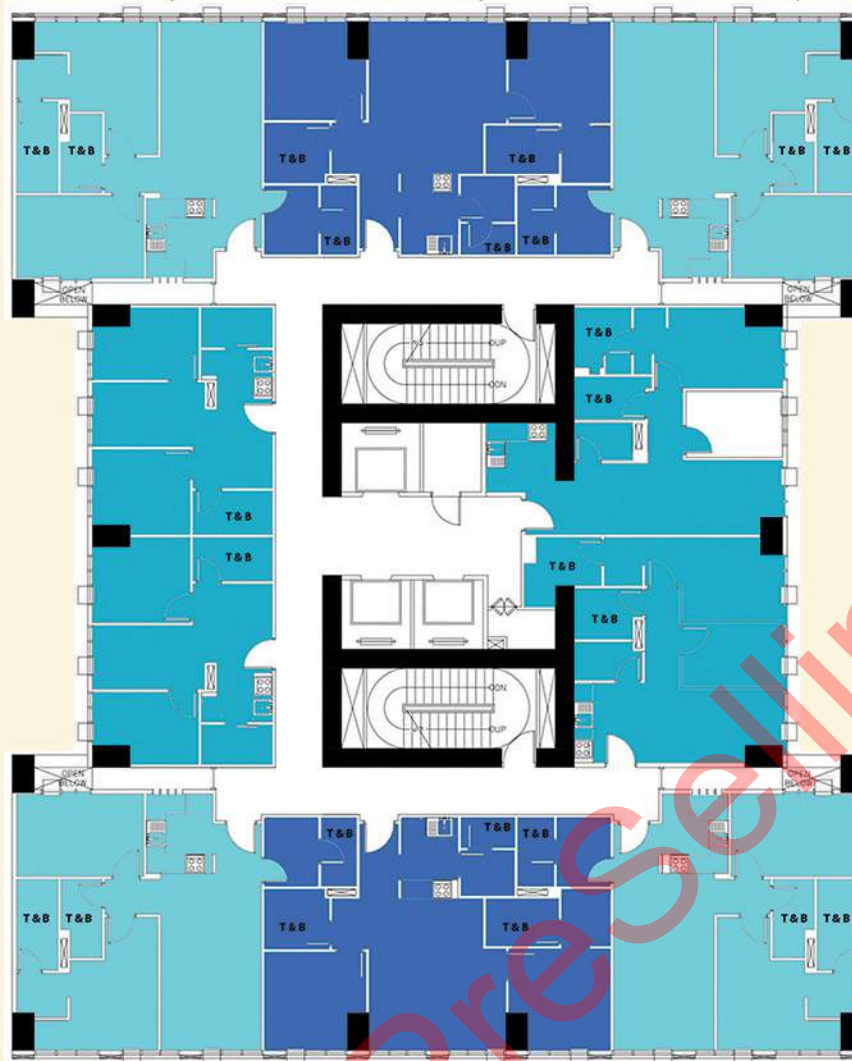
**ROBINSONS LAND**  
 RESIDENTIAL DIVISION

We Are Home.

**DISCLAIMER:** All plans, specifications, and illustrations contained herein are for identification and reference only. While every care has been taken in preparation of this material, all details are subject to change without prior notice and do not constitute part of any offer or contract. The developer does not authorize the person to render any representation or warranty regarding this project. Sales agents are not authorized to make statements outside this material.

**ROBINSONS**  
**COMMUNITIES**  
 Affordable quality condos





**UNITS PER FLOOR - 10**

	<b>2 - BEDROOM</b>	<b>4</b>
	Approx. 43.90 - 58.80 sqm	
	<b>2 - BEDROOM</b>	<b>2</b>
	Approx. 69.80 sqm	
	<b>2 - BEDROOM</b>	<b>4</b>
	Approx. 73.30 sqm	

**TYPICAL FLOOR PLAN**

High Zone

34th to 38th Floor



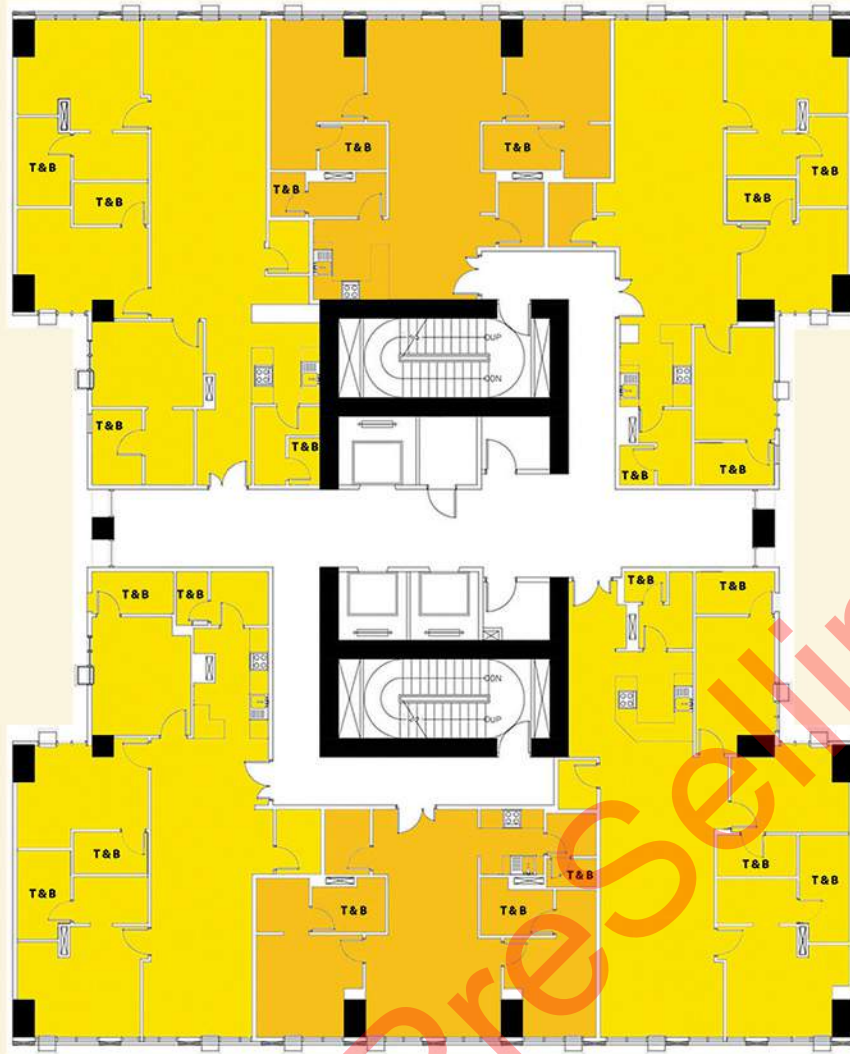
**ROBINSONS LAND**  
 RESIDENTIAL DIVISION

We Are Home.

DISCLAIMER: All plans, specifications, and illustrations contained herein are for identification and reference only. While every care has been taken in preparation of this material, all details are subject to change without prior notice and do not constitute part of any offer or contract. The developer does not authorize the person to render any representation or warranty regarding this project. Sales agents are not authorized to make statements outside this material.

**ROBINSONS**  
**COMMUNITIES**  
 Affordable quality condos





## TYPICAL FLOOR PLAN

High Zone

39th to 40th Floor

### UNITS PER FLOOR - 6

	<b>3 - BEDROOM</b>	<b>4</b>
	Approx. 114.56 - 126.41 sqm	
	<b>2 - BEDROOM</b>	<b>2</b>
	Approx. 78.76 - 87.48 sqm	



**ROBINSONS LAND**  
 RESIDENTIAL DIVISION

We Are Home.

DISCLAIMER: All plans, specifications, and illustrations contained herein are for identification and reference only. While every care has been taken in preparation of this material, all details are subject to change without prior notice and do not constitute part of any offer or contract. The developer does not authorize the person to render any representation or warranty regarding this project. Sales agents are not authorized to make statements outside this material.

**ROBINSONS**  
**COMMUNITIES**  
*Affordable quality condos*







## UNITIZED FLOOR PLAN

Studio

Approx. 21.72 sqm



**ROBINSONS LAND**  
RESIDENTIAL DIVISION

We Are Home.

DISCLAIMER: All plans, specifications, and illustrations contained herein are for identification and reference only. While every care has been taken in preparation of this material, all details are subject to change without prior notice and do not constitute part of any offer or contract. The developer does not authorize the person to render any representation or warranty regarding this project. Sales agents are not authorized to make statements outside this material.

**ROBINSONS**  
**COMMUNITIES**  
*Affordable quality condos*





### UNITIZED FLOOR PLAN

1 Bedroom Unit

Approx. 38.60 sqm







## UNITIZED FLOOR PLAN

2 Bedroom Unit

Approx. 69.80 sqm



**ROBINSONS LAND**  
 RESIDENTIAL DIVISION

We Are Home.

DISCLAIMER: All plans, specifications, and illustrations contained herein are for identification and reference only. While every care has been taken in preparation of this material, all details are subject to change without prior notice and do not constitute part of any offer or contract. The developer does not authorize the person to render any representation or warranty regarding this project. Sales agents are not authorized to make statements outside this material.

**ROBINSONS**  
**COMMUNITIES**  
*Affordable quality condos*





### UNIT FEATURES

Typical Residential Unit Features:

- Entrance panel door with viewer
- Intercom per unit connected to the reception
- Automatic smoke detector and fire alarm with sprinkler system in all units

Provision for:

- Individual electric and water meter
- Telephone line per unit
- Cable TV line at living area and master bedroom
- Space and electric outlet for window type air conditioning system
- Space and utilities for single tub washing machine



**ROBINSONS LAND**  
RESIDENTIAL DIVISION

We Are Home.

DISCLAIMER: All plans, specifications, and illustrations contained herein are for identification and reference only. While every care has been taken in preparation of this material, all details are subject to change without prior notice and do not constitute part of any offer or contract. The developer does not authorize the person to render any representation or warranty regarding this project. Sales agents are not authorized to make statements outside this material.

**ROBINSONS**  
**COMMUNITIES**  
*Affordable quality condos*



PARTICULARS	BEDROOMS	LIVING/DINING	KITCHEN	MASTER/COMMON T&B
FLOOR	Laminated Flooring	Homogeneous Tiles		Ceramic Tiles
WALL	Plaster Wall with Paint Finish			Combination of Ceramic Tiles and Plaster Wall with Paint Finish
CEILING	Painted Slab Soffit (No Ceiling)			Moisture-resistant Gypsum Board in Paint Finish
OTHERS	Bedroom Closet	N/A	<ul style="list-style-type: none"><li>• Granite Countertop</li><li>• Range Hood</li><li>• 2-Burner Cook Top (Studio and 1BR)</li><li>• 4-Burner Cook Top (2 BR and 3BR)</li><li>• Overhead and Base Cabinets</li></ul>	<ul style="list-style-type: none"><li>• Mirror</li><li>• Shower Enclosure</li><li>• Provision for Single Point Hot Water Line at Shower Area</li></ul>

#### UNIT DELIVERABLES







#### AMENITIES

- Main lobby
- Life Fitness Gym
- Play Pod
- Game Station
- Private Theater
- Leisure Pool
- Kiddie Pool
- Sky Lounge
- Sky Garden



**ROBINSONS LAND**  
RESIDENTIAL DIVISION

We Are Home.

DISCLAIMER: All plans, specifications, and illustrations contained herein are for identification and reference only. While every care has been taken in preparation of this material, all details are subject to change without prior notice and do not constitute part of any offer or contract. The developer does not authorize the person to render any representation or warranty regarding this project. Sales agents are not authorized to make statements outside this material.

**ROBINSONS**  
**COMMUNITIES**  
*Affordable quality condos*





## AMENITIES

Life Fitness Gym



**ROBINSONS LAND**  
RESIDENTIAL DIVISION

We Are Home.

DISCLAIMER: All plans, specifications, and illustrations contained herein are for identification and reference only. While every care has been taken in preparation of this material, all details are subject to change without prior notice and do not constitute part of any offer or contract. The developer does not authorize the person to render any representation or warranty regarding this project. Sales agents are not authorized to make statements outside this material.

**ROBINSONS**  
**COMMUNITIES**  
*Affordable quality condos*





## AMENITIES

Leisure Pool and Kiddie Pool



**ROBINSONS LAND**  
RESIDENTIAL DIVISION

We Are Home.

DISCLAIMER: All plans, specifications, and illustrations contained herein are for identification and reference only. While every care has been taken in preparation of this material, all details are subject to change without prior notice and do not constitute part of any offer or contract. The developer does not authorize the person to render any representation or warranty regarding this project. Sales agents are not authorized to make statements outside this material.

**ROBINSONS**  
**COMMUNITIES**  
*Affordable quality condos*





## AMENITIES

Play Pod and Game Station



**ROBINSONS LAND**  
RESIDENTIAL DIVISION

We Are Home.

DISCLAIMER: All plans, specifications, and illustrations contained herein are for identification and reference only. While every care has been taken in preparation of this material, all details are subject to change without prior notice and do not constitute part of any offer or contract. The developer does not authorize the person to render any representation or warranty regarding this project. Sales agents are not authorized to make statements outside this material.

**ROBINSONS**  
**COMMUNITIES**  
*Affordable quality condos*





## AMENITIES

Private Theater



**ROBINSONS LAND**  
RESIDENTIAL DIVISION

We Are Home.

DISCLAIMER: All plans, specifications, and illustrations contained herein are for identification and reference only. While every care has been taken in preparation of this material, all details are subject to change without prior notice and do not constitute part of any offer or contract. The developer does not authorize the person to render any representation or warranty regarding this project. Sales agents are not authorized to make statements outside this material.

**ROBINSONS**  
**COMMUNITIES**  
*Affordable quality condos*





## AMENITIES

Sky Garden and Sky Lounge



**ROBINSONS LAND**  
RESIDENTIAL DIVISION

We Are Home.

DISCLAIMER: All plans, specifications, and illustrations contained herein are for identification and reference only. While every care has been taken in preparation of this material, all details are subject to change without prior notice and do not constitute part of any offer or contract. The developer does not authorize the person to render any representation or warranty regarding this project. Sales agents are not authorized to make statements outside this material.

**ROBINSONS**  
**COMMUNITIES**  
*Affordable quality condos*





**ROBINSONS LAND**  
RESIDENTIAL DIVISION

We Are Home.

DISCLAIMER: All plans, specifications, and illustrations contained herein are for identification and reference only. While every care has been taken in preparation of this material, all details are subject to change without prior notice and do not constitute part of any offer or contract. The developer does not authorize the person to render any representation or warranty regarding this project. Sales agents are not authorized to make statements outside this material.

**ROBINSONS**  
**COMMUNITIES**  
*Affordable quality condos*



**ROBINSONS LAND**  
**CORPORATION**

YOUR DREAMS, OUR FOUNDATION.

Brought to you by:  
[www.PreSelling.com.ph](http://www.PreSelling.com.ph)  
+63 917 703 7707  
+63 999 883 4593

## ROBINSONS LAND CORPORATION

Chimes Greenhills is a project of Robinsons Land Corporation under its Robinsons Communities brand.

Robinsons Communities is committed in delivering quality and affordably priced homes in a relaxed community setting. It promises to provide homeowners a happy and relaxed way of life by offering open spaces ideal for community get-togethers, fun and functional amenities, complementing facilities and services for neighborhood and household conveniences all in a easily accessible location.

Robinsons Land Corporation is one of the Philippines' reputable real estate developers. It is a company of JG Summit Holdings, Inc., one of the largest conglomerates in the Philippines with interests in manufacturing, airline, real estate, banking, and petrochemicals. Robinsons Land has been a stable developer with businesses in malls, hotels, office buildings, horizontal housing, and residential condominium developments. The company has been awarded by leading international magazine Euromoney for being the Overall Best Managed Company in the Philippines for 2013 and 2014 consecutively. This citation is given to companies that displayed impressive execution of management accessibility, accounting transparency and corporate governance procedures.

  
**CHIMES**  
GREENHILLS