

# Avída Towers

S u c a t



## Dr. A. Santos Ave., Parañaque City

### Nearby landmarks:

- 3.6kms away from NAIA 1
- 2.6km from Duty Free

### Nearby schools:

- De La Salle University
- Olivarez College
- St. Benedict College
- St. James School of Parañaque

### Nearby hospitals:

- Asian Hospital
- Perpetual Help Medical Center
- Medical Center Parañaque
- Ospital ng Muntinlupa



# 2.1

HEC DEVELOPMENT

A Joint Venture of  
**AVIDA LAND CORP**  
and  
**AYALA LAND INC**



# Site Development Plan



Secondary Gate

Main Entrance



# Tower 9

**2 Parking Levels**  
(Basement/Ground Floor)

**12 Residential Floors**  
Total Units: **372**



## General Building Features

- 2 elevators per tower
- Parking units at the ground floor and basement
- Exclusive amenity at the roof deck

## Safety and Security Features

- Fire alarm and smoke detection system
- Automatic fire sprinkler system
- 2 fire exits per floor
- Emergency power
- CCTV cameras in critical areas
- 24-hour building security

## Efficiency Features

- Maximized natural lighting
- Maximized ventilation

- Adult and Kiddie Pool
- Function Hall
- Children's Play Area
- Outdoor Gym
- Jogging Path
- Picnic Area
- Shooting Area
- Landscaped Garden





Children's Play Equipment

Picnic Area/Foot Reflexology

Basketball Shooting Hoop

Outdoor Gym Equipment

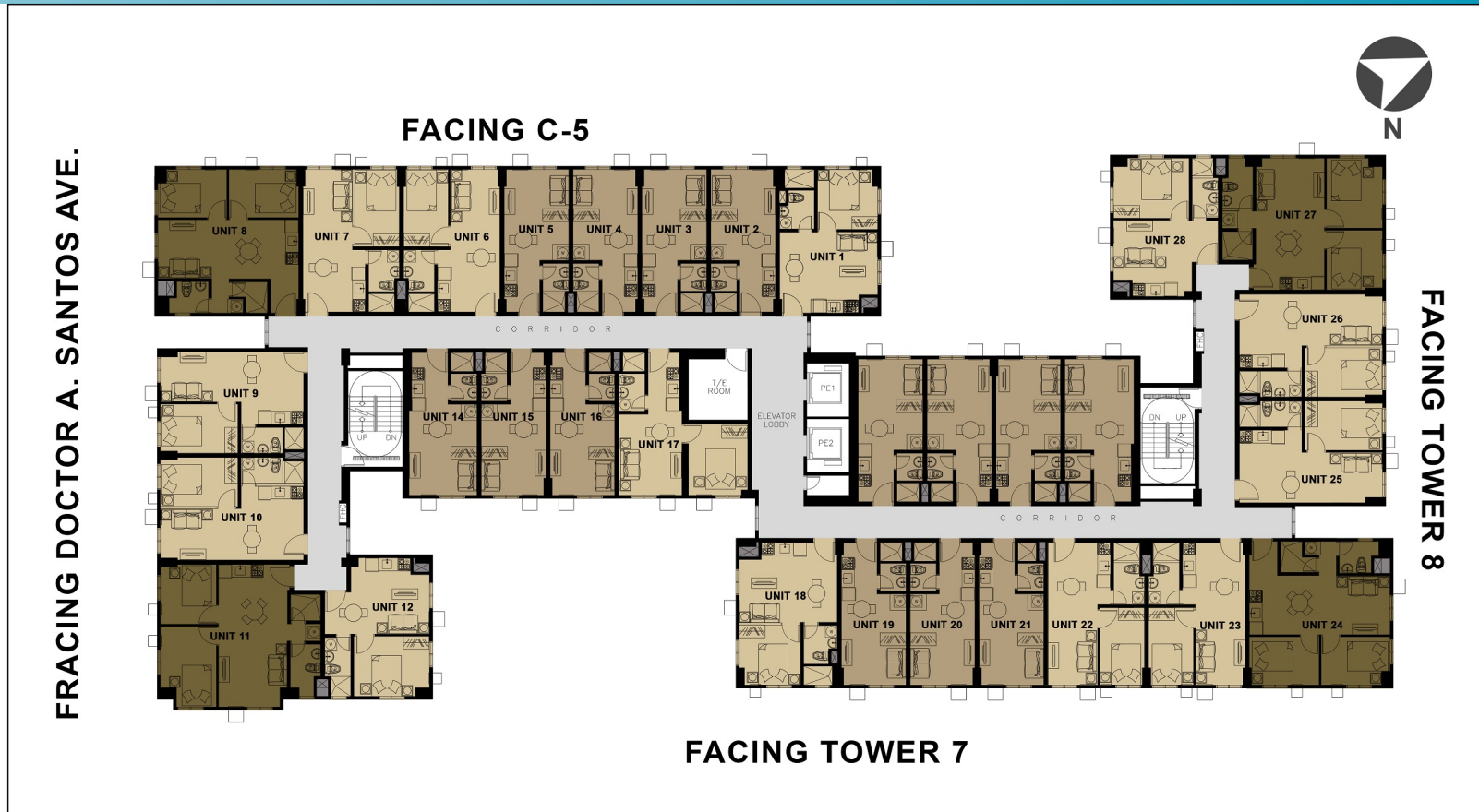
Artist's Perspective





Artist's Perspective

# Typical Floor Plan (Tower 9)



# Studio Unit



**(21.46 to 23.41 sqm)**

# Typical 1BR Unit



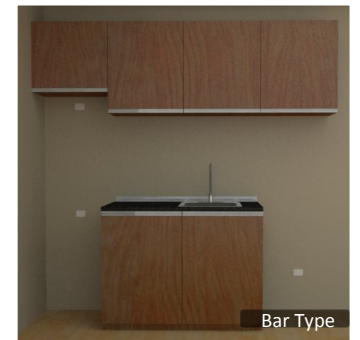
**(32.37 to 34.53 sqm)**

# Typical 2BR Unit



**(47.25 to 50.55 sqm)**

- ▣ Painted Walls and Ceiling
- ▣ Painted Interior Partitions
- ▣ Flat Slabs
- ▣ 600 x 600 Ceramic floor tiles
- ▣ Woodgrain laminated Undercounter & Overhead Kitchen Cabinets
- ▣ Kitchen Sink & HPL Countertop
- ▣ Grease Trap
- ▣ Panoramic Windows
- ▣ Smoke Detector and Water Sprinkler
- ▣ Electrical Fixtures
- ▣ Telephone/Cable Provisions
- ▣ Complete T&B
- ▣ Ceramic Tiles for Toilet & Bath



- 1. Initial units for selling - 168 units (selected Studio & 1BR)**
- 2. All 2BR units – in THD, for future selling**
- 3. Applicable Payterm;**

<b>Local Buyer</b>	<b>Foreign Buyer</b>
<b>Spotcash (10% discount)</b>	Spotcash (10% discount)
<b>Deferred @ 42 mos.</b>	Deferred @ 42 mos.
<b>10/10/42 mos., balance Bank Financing</b>	Bank Financing is not applicable
<b>20% / 36 mos., balance Bank Financing</b>	10/10/42 mos., balance CASH

[www.PreSelling.com.ph](http://www.PreSelling.com.ph)  
[info@preselling.com.ph](mailto:info@preselling.com.ph)  
+63 917 703 7707