



TOWER	EAST TOWER
Unit	111
Unit Type	1-Bedroom
Area (sqm)	36.00
Unit Price	9,414,550.00
Parking Assignment	Optional and subject to availability
Parking Level	Basement 3
Parking Price	1,300,000.00

Investment Overview as of February 18 2023

Option 1: Cash Payment (99% in 30 days, 1% on 62nd month)

		Unit	Parking	Total
Price		9,414,550.00	1,300,000.00	10,714,550.00
Less: 15.00% Payment Scheme Discount	15%	-1,412,182.50		-1,412,182.50
Less: 1.00% Unit Discount	1%	-94,145.50		-94,145.50
Total Discounts Applied		-1,506,328.00		-1,506,328.00
Net Unit Price		7,908,222.00	1,300,000.00	9,208,222.00
Reservation Fee		50,000.00	25,000.00	75,000.00
Cash payment due in 30 days after reservation	99%	7,779,139.78	1,262,000.00	9,041,139.78
1% Retention Balance	1%	79,082.22	13,000.00	92,082.22
6% Closing Fees	6%	474,493.32	78,000.00	552,493.32

Option 2: Deferred (100% in 62 months)

		Unit	Parking	Total
Price		9,414,550.00	1,300,000.00	10,714,550.00
Less: 12.00% Payment Scheme Discount	12%	-1,129,746.00		-1,129,746.00
Less: 1.00% Unit Discount	1%	-94,145.50		-94,145.50
Total Discounts Applied		-1,223,891.50		-1,223,891.50
Net Unit Price		8,190,658.50	1,300,000.00	9,490,658.50
Reservation Fee		50,000.00	25,000.00	75,000.00
Monthly Amortization in 62 months	100%	131,300.94	20,564.52	151,865.46
6% Closing Fees	6%	491,439.51	78,000.00	569,439.51

Option 3: 20% DP, 20% in 60 months, 60% on the 62nd month

		Unit	Parking	Total
Price		9,414,550.00	1,300,000.00	10,714,550.00
Less: 6.00% Payment Scheme Discount	6%	-564,873.00		-564,873.00
Less: 1.00% Unit Discount	1%	-94,145.50		-94,145.50
Total Discounts Applied		-659,018.50		-659,018.50
Net Unit Price		8,755,531.50	1,300,000.00	10,055,531.50
Reservation Fee		50,000.00	25,000.00	75,000.00
20% Downpayment	20%	1,701,106.30	235,000.00	1,936,106.30
20% Monthly Amortization in 60 months	20%	29,185.11	4,333.33	33,518.44
60% Retention Balance	60%	5,253,318.90	780,000.00	6,033,318.90
6% Closing Fees	6%	525,331.89	78,000.00	603,331.89

Option 4: 20% in 61 months, 80% on the 62nd month

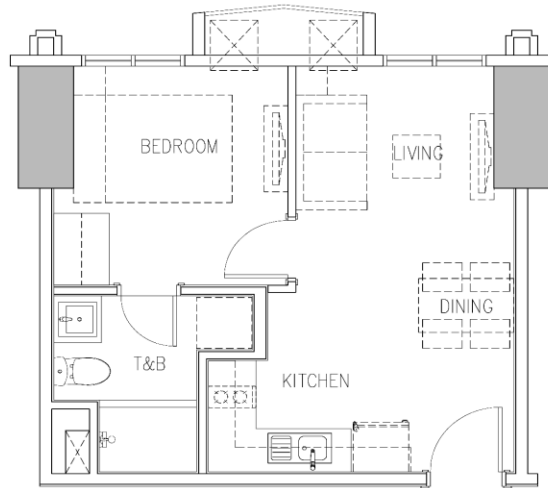
		Unit	Parking	Total
Price		9,414,550.00	1,300,000.00	10,714,550.00
Less: 0% Payment Scheme Discount	0%	0.00		0.00
Less: 1.00% Unit Discount	1%	-94,145.50		-94,145.50
Total Discounts Applied		-94,145.50		-94,145.50
Net Unit Price		9,320,404.50	1,300,000.00	10,620,404.50
Reservation Fee		50,000.00	25,000.00	75,000.00
20% Monthly Amortization in 61 months	20%	29,739.03	3,852.46	33,591.49
80% Retention Balance	80%	7,456,323.60	1,040,000.00	8,496,323.60
6% Closing Fees	6%	559,224.27	78,000.00	637,224.27

Option 5: PROMO 15% in 61 months, 85% on the 62nd month

		Unit	Parking	Total
Price		9,414,550.00	1,300,000.00	10,714,550.00
Less: 0% Payment Scheme Discount	0%	0.00		0.00
Less: 1.00% Unit Discount	1%	-94,145.50		-94,145.50
Total Discounts Applied		-94,145.50		-94,145.50
Net Unit Price		9,320,404.50	1,300,000.00	10,620,404.50
Reservation Fee		50,000.00	25,000.00	75,000.00
15% Monthly Amortization in 61 months	15%	22,099.36	2,786.89	24,886.24
85% Retention Balance	85%	7,922,343.83	1,105,000.00	9,027,343.83
6% Closing Fees	6%	559,224.27	78,000.00	637,224.27

NOTES:

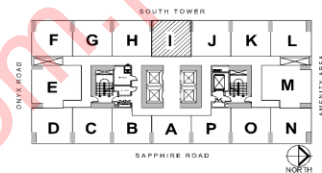
1. Refer to the project Pricelist and Payment Scheme memo for further details.
2. For any discrepancies between this sample computation and that of the official pricelist, the latter shall prevail.
3. Price, availability of unit and parking slot and other details appearing herein are subject to change without prior notice.
4. The Developer reserves the right to correct any errors appearing herein at anytime including, but not limited to, those resulting from typographical errors.
5. The 6% closing fees are net of unit and parking contract price.



Unit Area = ±36.00 SQM



**EAST TOWER
UNIT I (1-BEDROOM)**
TYPICAL FLOOR PLAN (3RD - 45TH FLOOR)



KEY PLAN

While every care has been taken in preparing this material, all plans, details and specifications contained herein are subject to change without prior notice and do not constitute part of any offer or contract. No warranty or representation is made by the Developer as to their accuracy. Furthermore, the Developer reserves the right to alter, deviate or dispense with the plans and specifications referred to herein to comply with certain building requirements such as but not limited to structural, mechanical, electrical, sanitary and plumbing requirements. In the event of alteration or deviation with the plans and specifications referred to herein, the Developer shall be rendered free and harmless from any liability arising therefrom. Furniture, appliances and equipment indicated herein are for illustrative purpose only and are not included in the deliverables.

Some views may currently be unobstructed. However, the Developer does not guarantee unobstructed views due to possible future development of neighboring lots. All drawings are not to scale.

ROBINSONS LAND CORPORATION
DATE ISSUED: JULY 26, 2019
This supercedes February 28, 2019 plans