

LARSEN

— T O W E R —

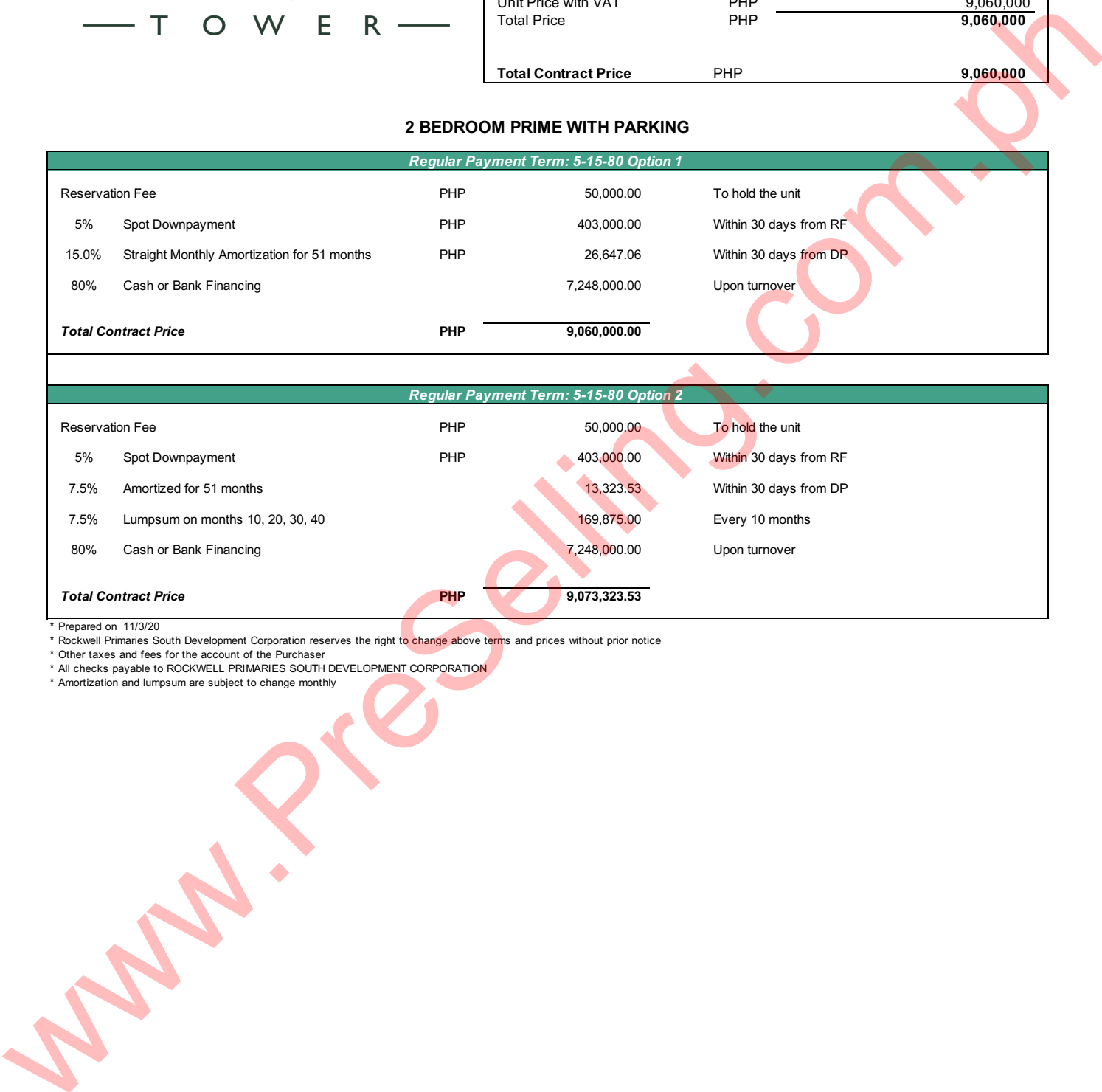
Unit Number:	LAR-314		
Tower:	Larsen Tower		
Turnover:	1Q 2025		
Orientation:	South		
Unit Area:	65sqm		
Unit Price with VAT	PHP		9,060,000
Total Price	PHP		9,060,000
Total Contract Price	PHP		9,060,000

2 BEDROOM PRIME WITH PARKING

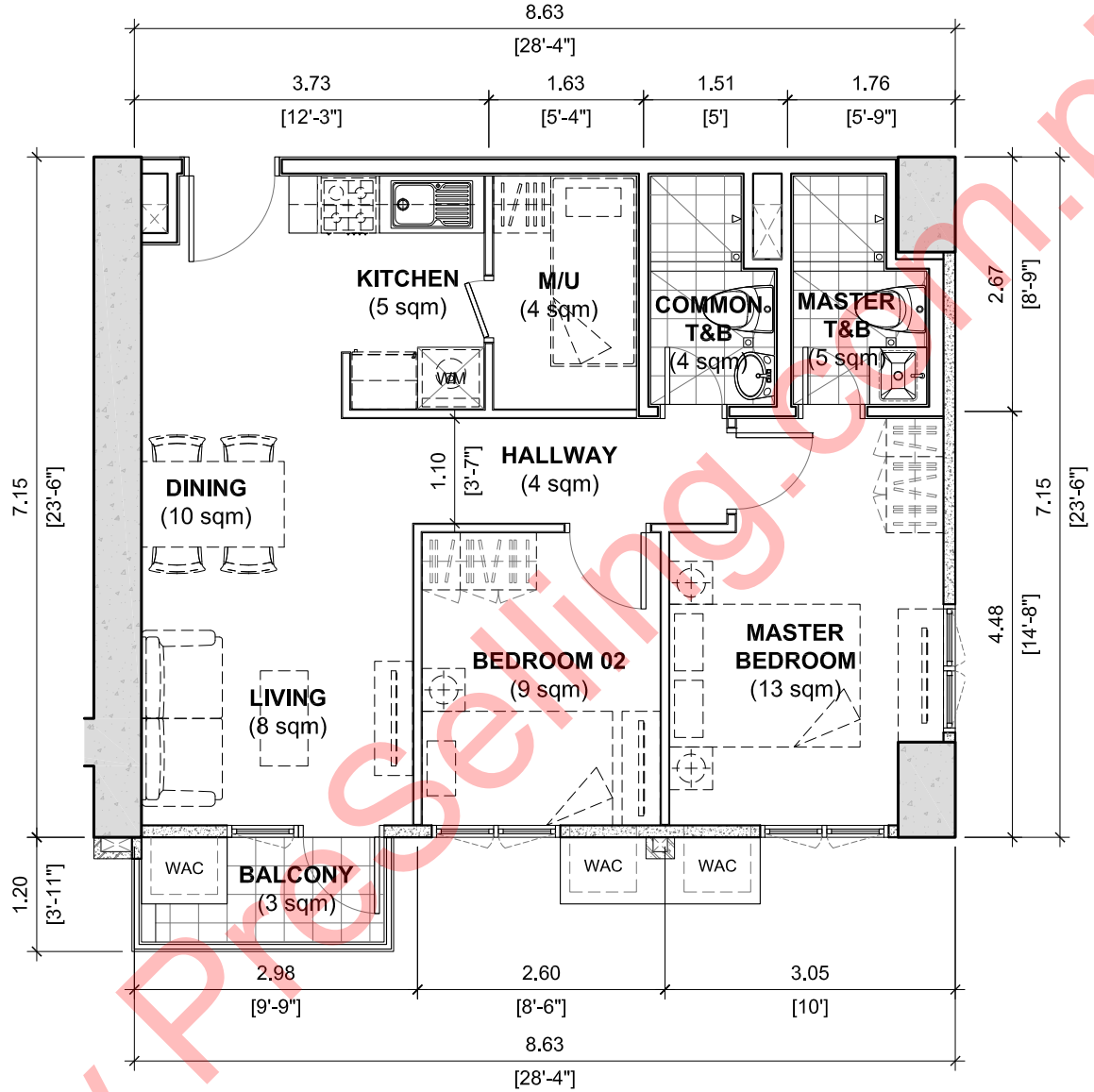
Regular Payment Term: 5-15-80 Option 1			
Reservation Fee	PHP	50,000.00	To hold the unit
5% Spot Downpayment	PHP	403,000.00	Within 30 days from RF
15.0% Straight Monthly Amortization for 51 months	PHP	26,647.06	Within 30 days from DP
80% Cash or Bank Financing		7,248,000.00	Upon turnover
Total Contract Price	PHP	9,060,000.00	

Regular Payment Term: 5-15-80 Option 2			
Reservation Fee	PHP	50,000.00	To hold the unit
5% Spot Downpayment	PHP	403,000.00	Within 30 days from RF
7.5% Amortized for 51 months		13,323.53	Within 30 days from DP
7.5% Lumpsum on months 10, 20, 30, 40		169,875.00	Every 10 months
80% Cash or Bank Financing		7,248,000.00	Upon turnover
Total Contract Price	PHP	9,073,323.53	

* Prepared on 11/3/20
 * Rockwell Primaries South Development Corporation reserves the right to change above terms and prices without prior notice
 * Other taxes and fees for the account of the Purchaser
 * All checks payable to ROCKWELL PRIMARIES SOUTH DEVELOPMENT CORPORATION
 * Amortization and lumpsum are subject to change monthly



LARSEN TOWER
EAST BAY
 RESIDENCES



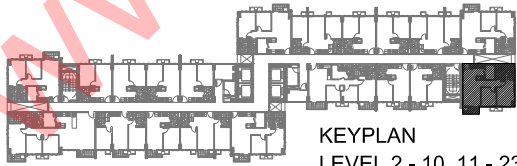
AREAS:

DINING	10 sqm	MASTER T&B	5 sqm
LIVING	8 sqm	BEDROOM 2	9 sqm
KITCHEN	5 sqm	COMMON T&B	4 sqm
HALLWAY	4 sqm	UTILITY	4 sqm
MASTER BEDROOM	13 sqm	BALCONY	3 sqm

TOTAL : 65 sqm

LEVEL : 2F-23F

UNIT TYPE: **UNIT 14**
 2-BEDROOM



The above information and drawings are conceptual and subject to change without prior notice. The Developer reserves the right to make additions, deletions and modifications to the drawings as the Developer may deem appropriate or desirable.
 22 January 2020