

TOWER 2

Facing The Palms Country Club



Unit Garden A
4 Bedroom Bi-level Unit
Total Area: ± 265 sqm
Liveable Area: ± 239 sqm

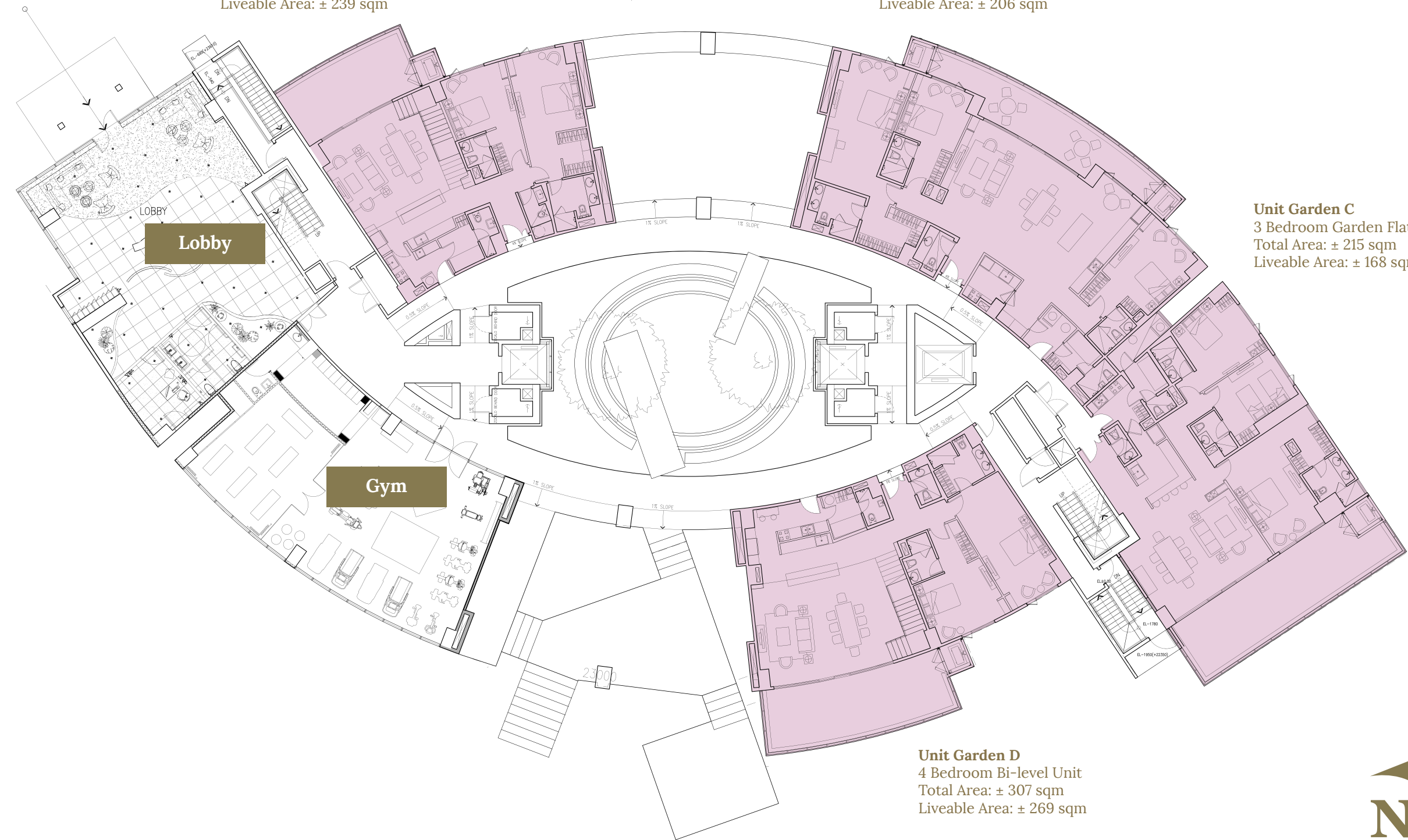
Unit Garden B
3 Bedroom Garden Flat
Total Area: ± 237 sqm
Liveable Area: ± 206 sqm

Unit Garden C
3 Bedroom Garden Flat
Total Area: ± 215 sqm
Liveable Area: ± 168 sqm

Unit Garden D
4 Bedroom Bi-level Unit
Total Area: ± 307 sqm
Liveable Area: ± 269 sqm

Ground Floor

 Garden Units



Facing Central Garden




Disclaimer: In pursuit of its objectives, the developer reserves the right to incorporate changes in the actual implementation plan and in the detailed design of private and public facilities and improvements without the need of notice and republication.

TOWER 2

Facing The Palms Country Club



2nd Floor

-  1 BR Unit
-  2 BR Unit
-  3 BR Deluxe
-  3 BR Premiere



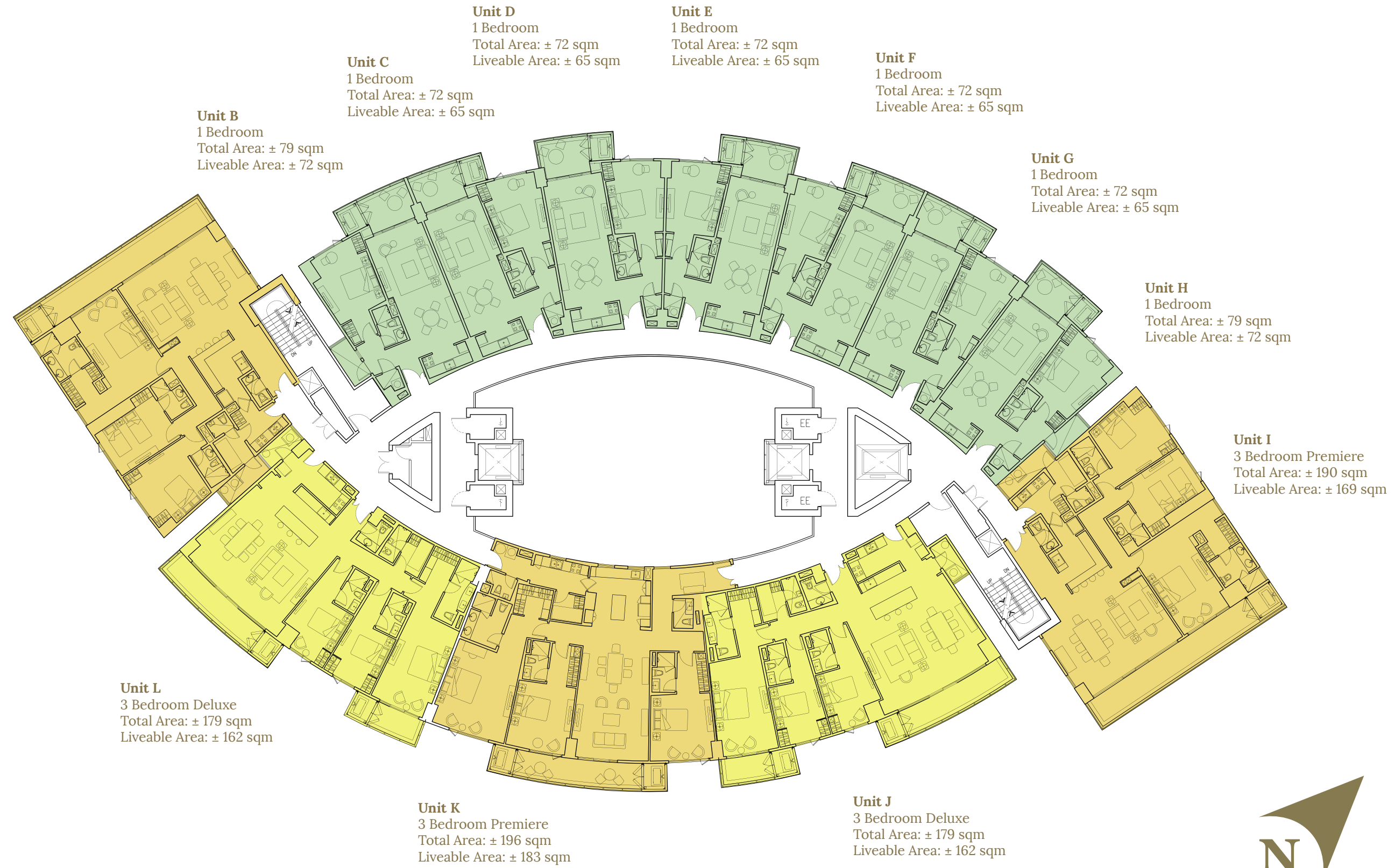
Facing Central Garden



Disclaimer: In pursuit of its objectives, the developer reserves the right to incorporate changes in the actual implementation plan and in the detailed design of private and public facilities and improvements without the need of notice and republication.

TOWER 2

Facing The Palms Country Club



3rd to 6th Floor

- 1 BR Unit
- 3 BR Deluxe
- 3 BR Premiere



Facing Central Garden



Disclaimer: In pursuit of its objectives, the developer reserves the right to incorporate changes in the actual implementation plan and in the detailed design of private and public facilities and improvements without the need of notice and republication.

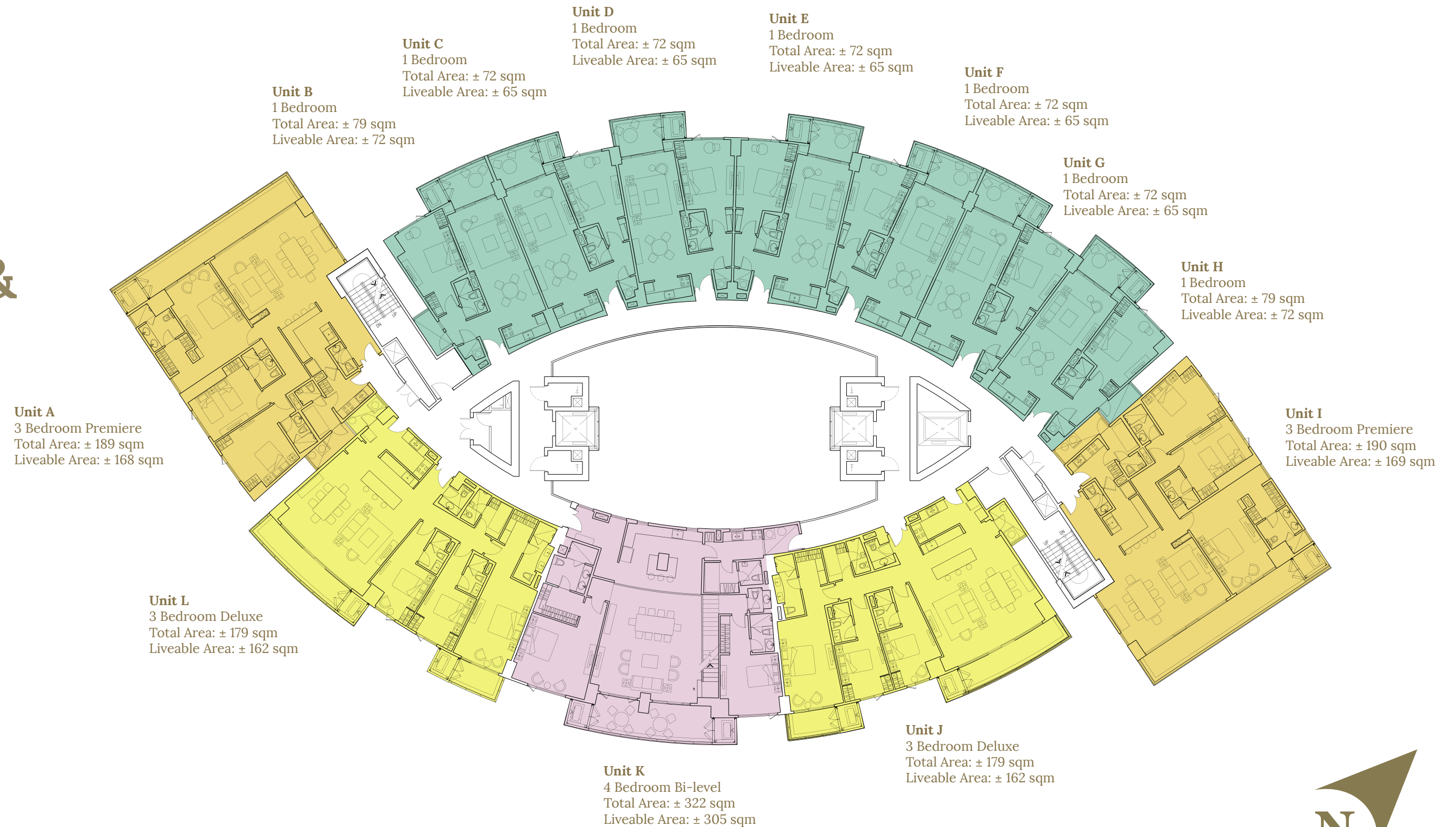
TOWER 2

Facing The Palms Country Club



7th, 9th, 11th & 14th Floor

- 1 BR Unit
- 4 BR Bi-level Unit
- 3 BR Deluxe
- 3 BR Premiere



Facing Central Garden






Disclaimer: In pursuit of its objectives, the developer reserves the right to incorporate changes in the actual implementation plan and in the detailed design of private and public facilities and improvements without the need of notice and republication.

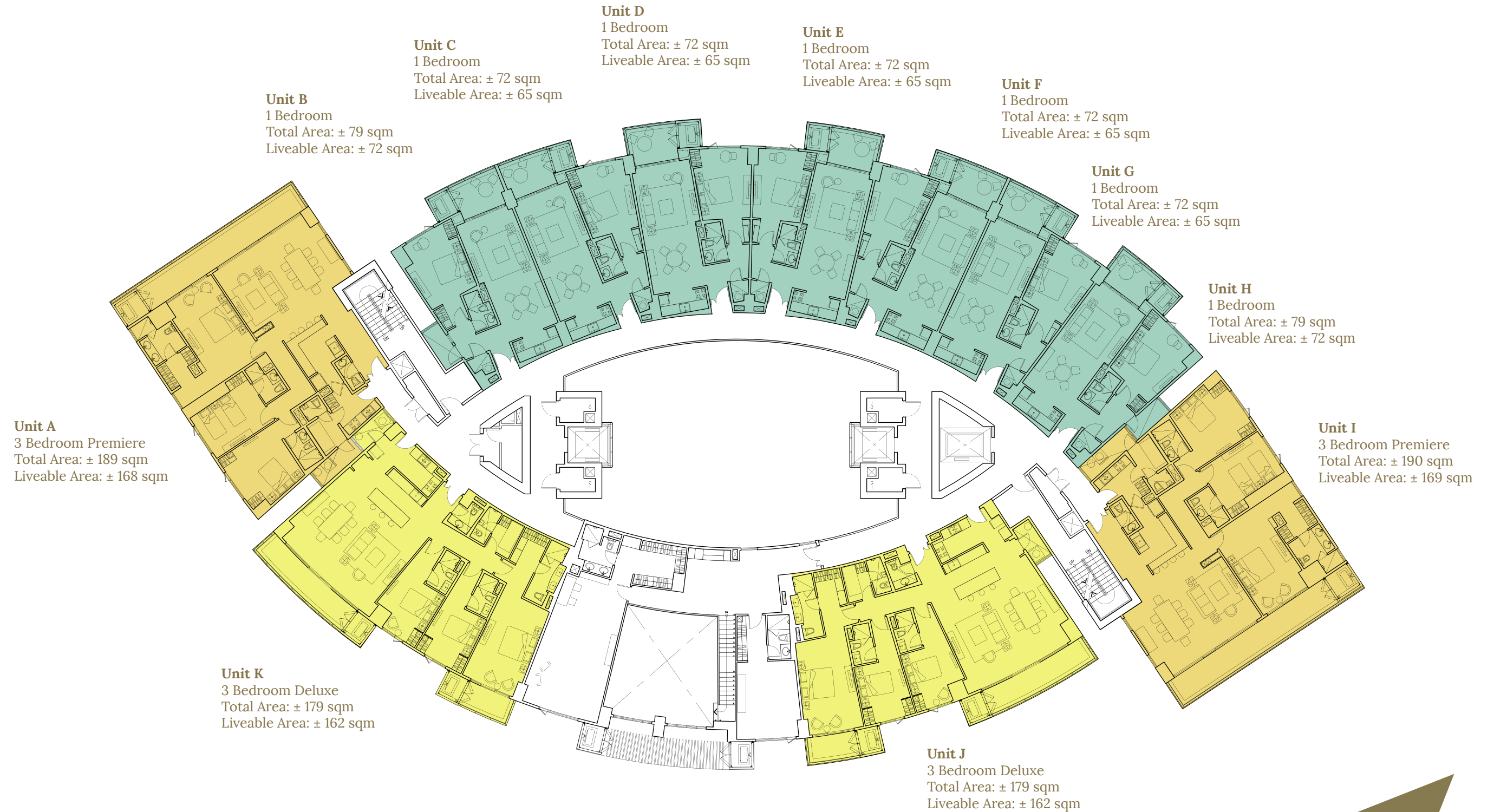
TOWER 2

Facing The Palms Country Club



8th, 10th & 12th Floor

-  1 BR Unit
-  3 BR Deluxe
-  3 BR Premiere



Facing Central Garden



Disclaimer: In pursuit of its objectives, the developer reserves the right to incorporate changes in the actual implementation plan and in the detailed design of private and public facilities and improvements without the need of notice and republication.

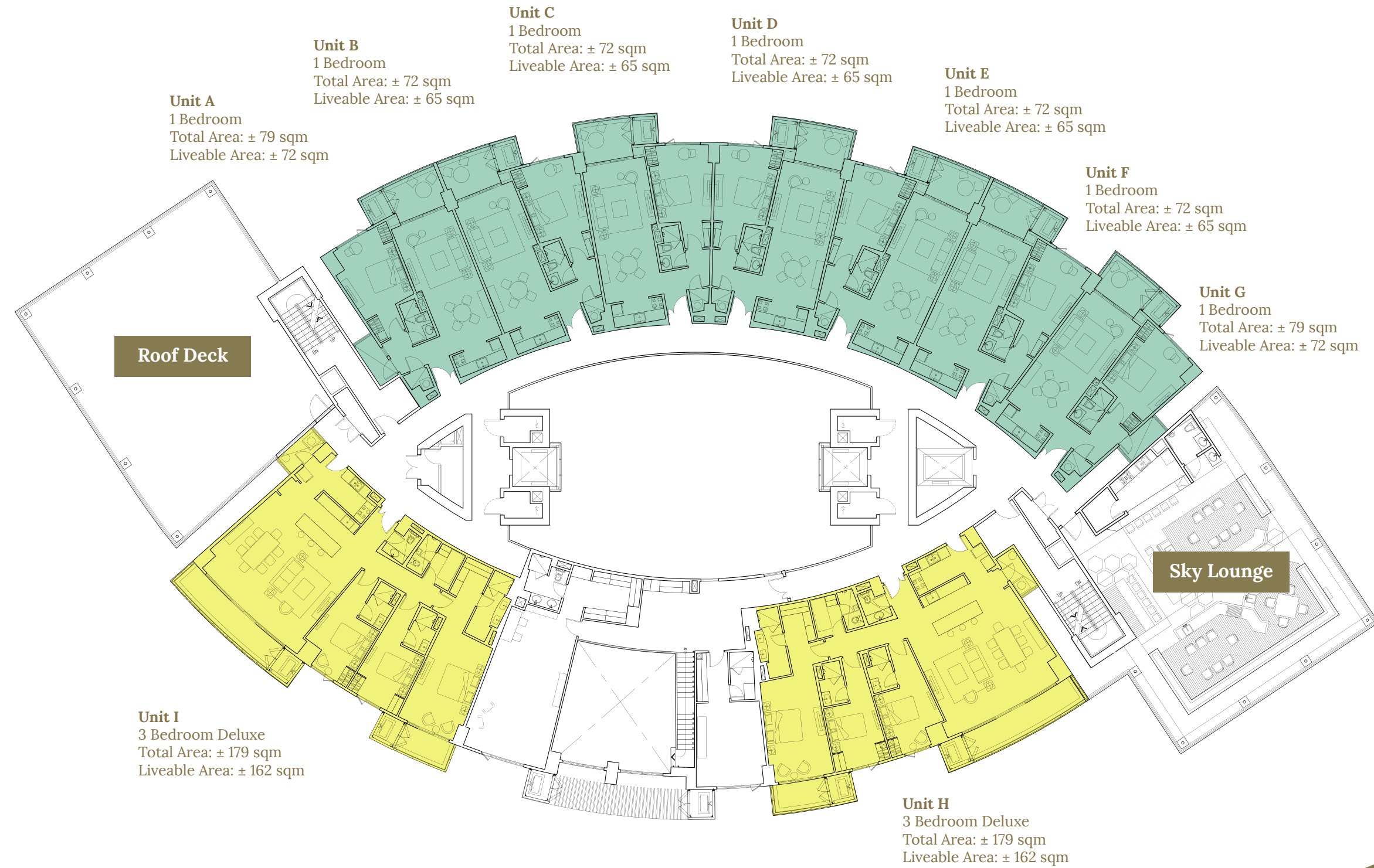
TOWER 2

Facing The Palms Country Club



15th Floor

-  1 BR Unit
-  3 BR Deluxe



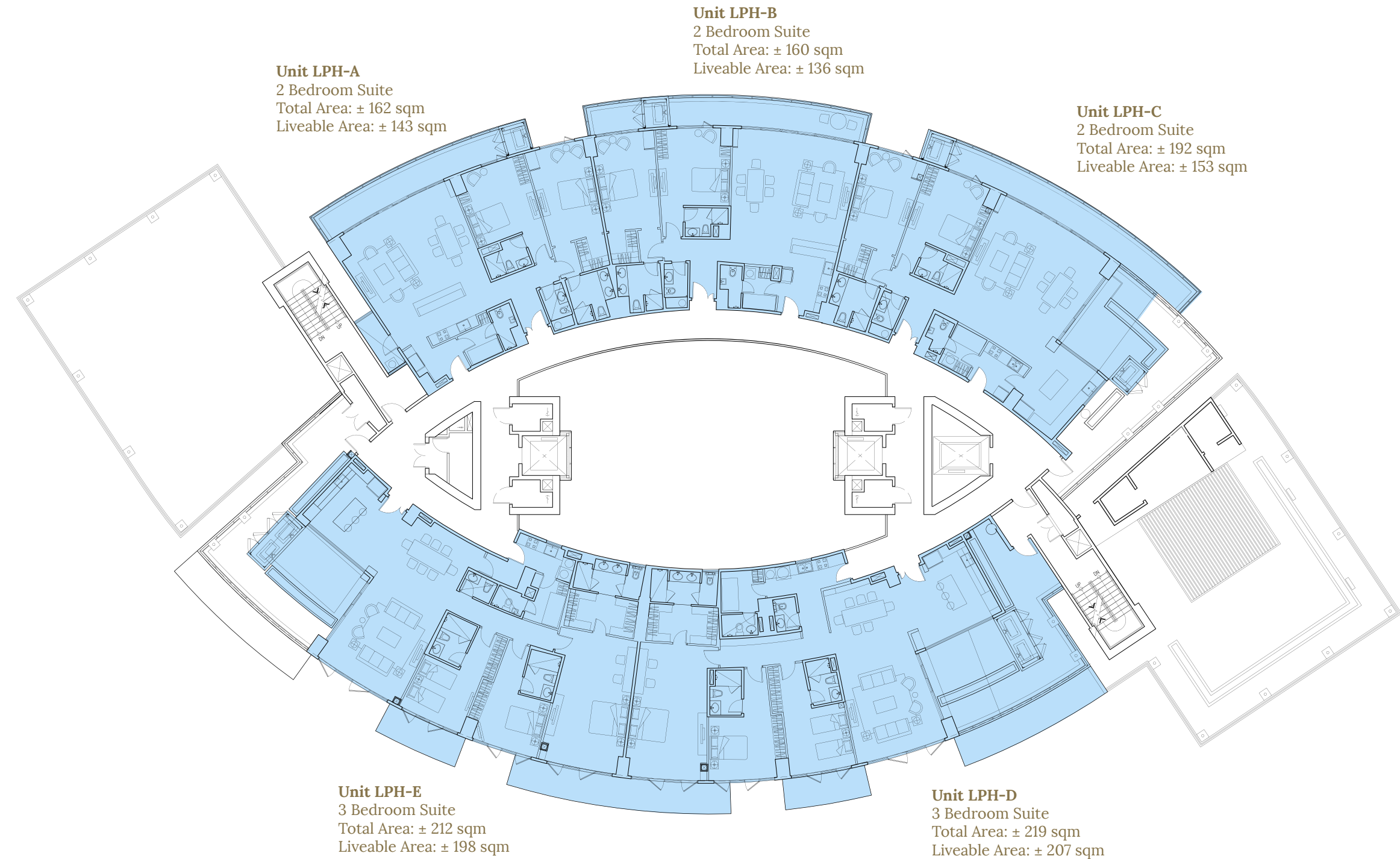
Facing Central Garden



Disclaimer: In pursuit of its objectives, the developer reserves the right to incorporate changes in the actual implementation plan and in the detailed design of private and public facilities and improvements without the need of notice and republication.

Lower Penthouse

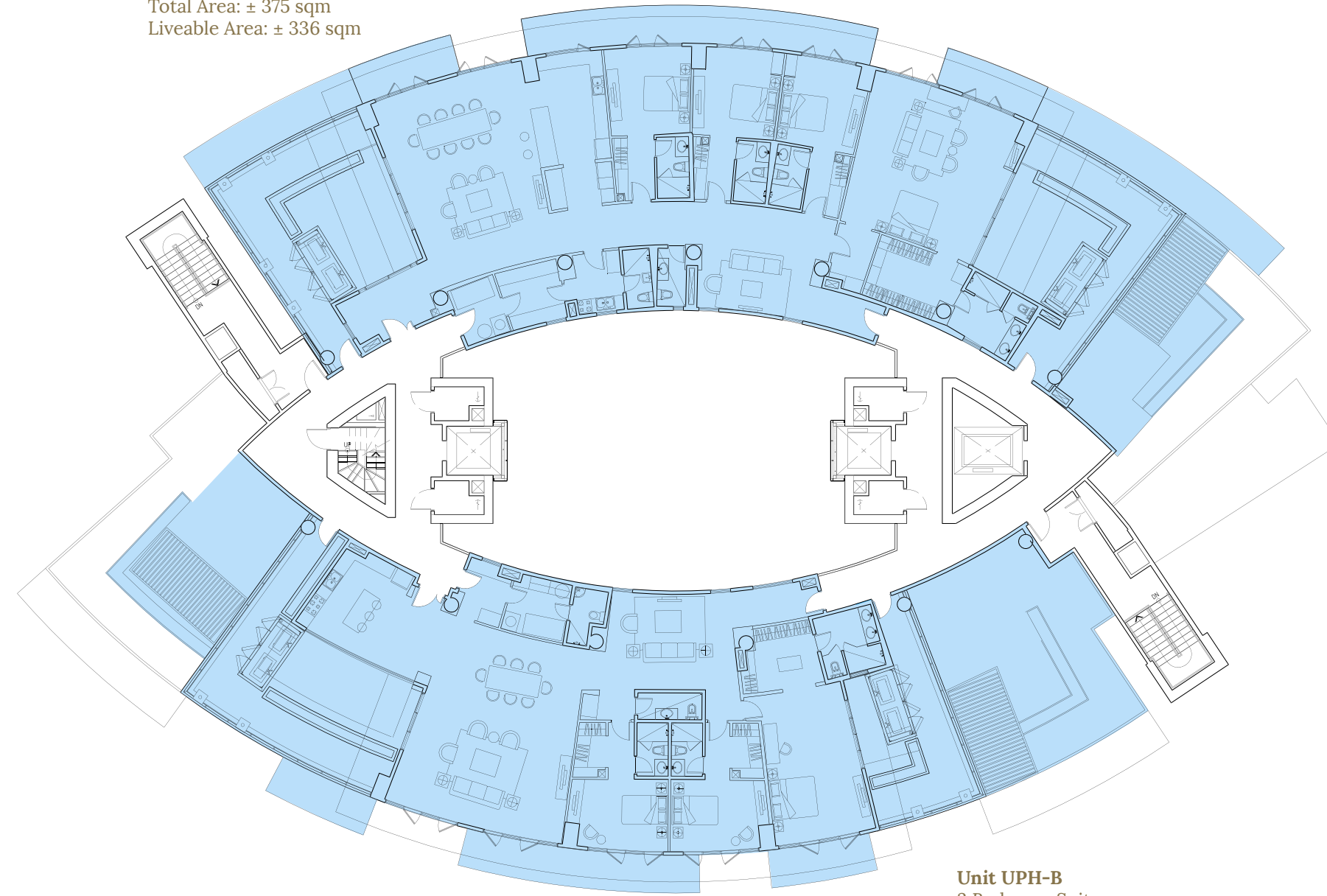
 Penthouse Units



Facing Central Garden



Unit UPH-A
4 Bedroom Suite
Total Area: ± 375 sqm
Liveable Area: ± 336 sqm



Upper Penthouse

 Penthouse Units

Unit UPH-B
3 Bedroom Suite
Total Area: ± 288 sqm
Liveable Area: ± 263 sqm



Facing Central Garden