



COSMO

S U I T E S

16-Storey, 2-Tower Co-living Residences
Pasay City



A Property Made for Business



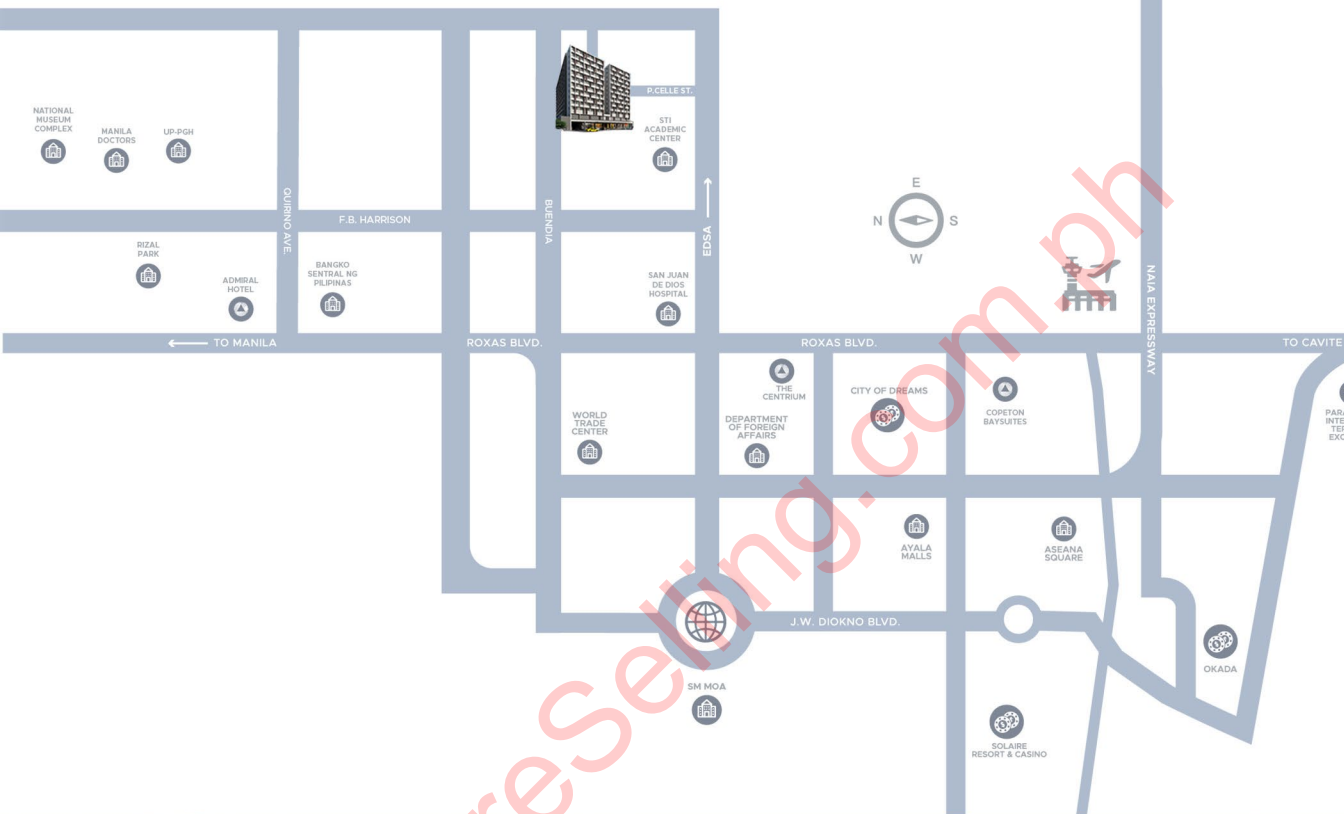
THE MANILA BAY AREA

The MANILA BAY AREA is growing into the next big thing in the Philippines.

At the BAY CITY are world-class entertainment resorts and the biggest shopping destinations in the country. Corporate centers, BPO and KPO offices are also stationed in the area.

In the PASAY CITY proper, headquarters of some of the country's top conglomerates as well as hospitals and colleges are situated there.

At the side of MANILA, government head offices and major universities are among the key contributors in the country's capital.



MANILA BAY

CENTRAL LOCATION

Strategically located at the center of the Manila Bay Area, schools and places of work are an easy walk or bike ride away. After the work week, transport hubs are also accessible when going home to one's permanent address.

OFFICES

Double Dragon Plaza	1.3 km
Aseana One	2.3 km
Aseana Two	2.3 km
Five E-com Center	2.3 km
Four E-com Center	2.4 km
Two E-com Center	2.6 km
Three E-com Center	2.7 km
The Centrum	2.7 km

SCHOOLS

STI Academic Center	600 m
National University MOA	2.4 km
Singapore School of Manila	2.8 km
Manila Tytana Colleges	2.9 km
De La Salle University	4.6 km
U.P. Manila	6.3 km

GOVERNMENT

Department of Foreign Affairs	2.3 km
Securities and Exchange Commission	3.9 km
Bangko Sentral ng Pilipinas	5.5 km
Court of Appeals	7.8 km

COMMERCIAL

IKEA	2.5 km
SM Mall of Asia	3.0 km
Ayala Mall Manila Bay	3.0 km
Aseana Square	3.2 km
Blue Bay Walk	4.7 km

LEISURE & ENTERTAINMENT

East Ocean Palace	2.7 km
Conrad Hotel	3.1 km
City of Dreams Manila	3.1 km
Solaire Resort and Casino	4.0 km
Okada Manila	5.4 km

HOSPITALS

San Juan de Dios Hospital	1.2 km
Pasay City General Hospital	1.6 km
Adventist Medical Center	4.4 km
Philippine General Hospital	5.9 km
Manila Doctors Hospital	6.7 km

TRANSPORTATION

MRT-LRT Taft Station	800m
NAIA 1	4.5 km
PITX	4.7 km

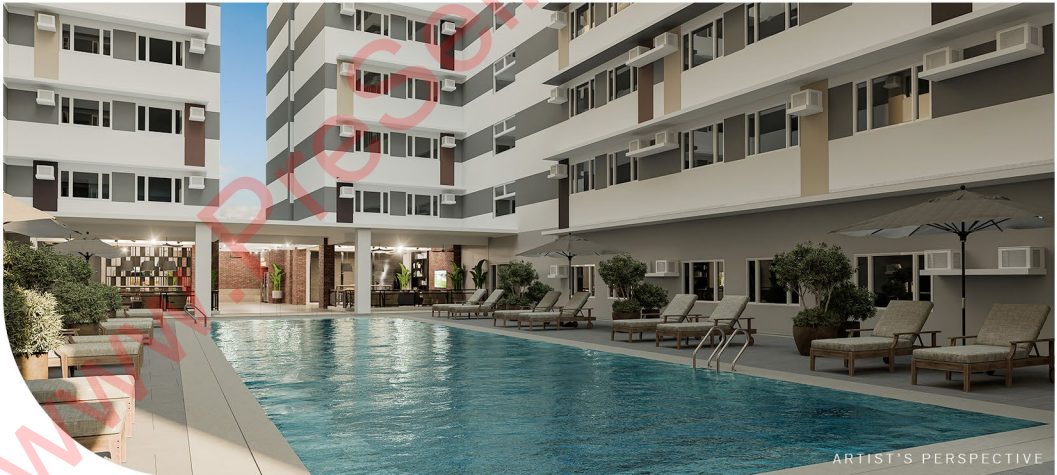
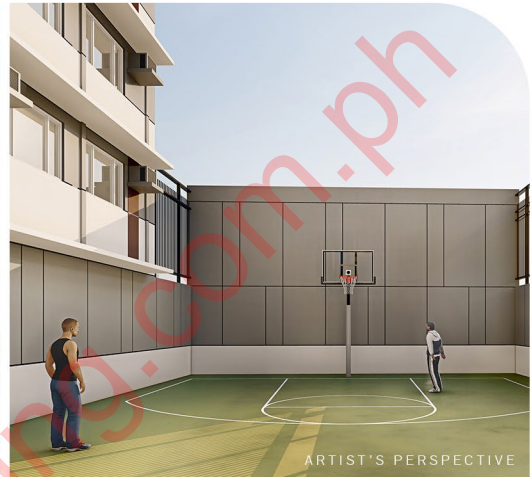


CUSTOMER-CENTRIC AMENITIES

Cosmo Suites is designed with amenities that make it a top choice among city dwellers. These are curated to match the lifestyle habits of intended tenants making them want to live longer in the property.

HEALTH & WELLNESS

Mind & Body Center
Sports Hub



RECREATION

Game Hub
Cosmo Lounge
20-meter Lap Pool



**CONCEPTIVELY
DESIGNED**

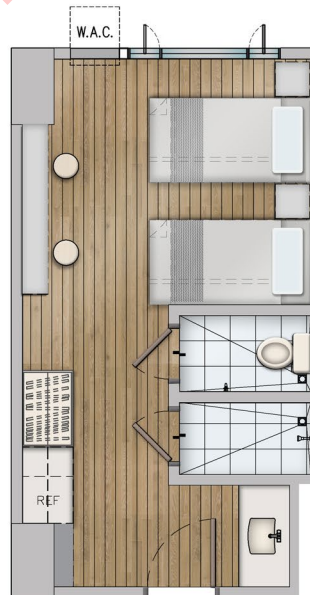
Rental-Ready Units

Say yes to fully furnished and smart-tech units and no to additional investment once you accept your unit.



TWIN SUITES

Offering additional privacy for the busy professional, the Twin Suites presents a fully-furnished accommodation with 2 twin-sized beds.



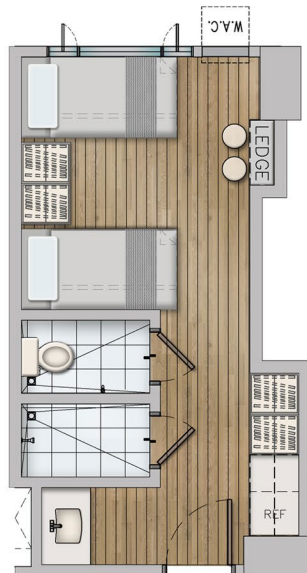
uch upgraded
capital when

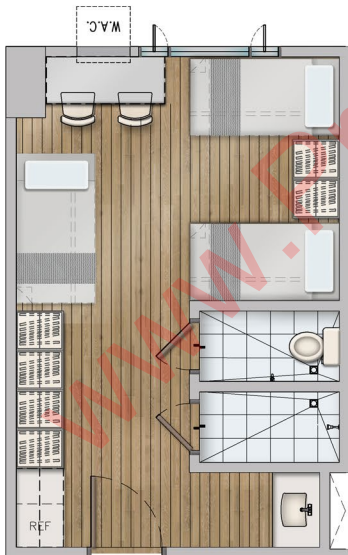
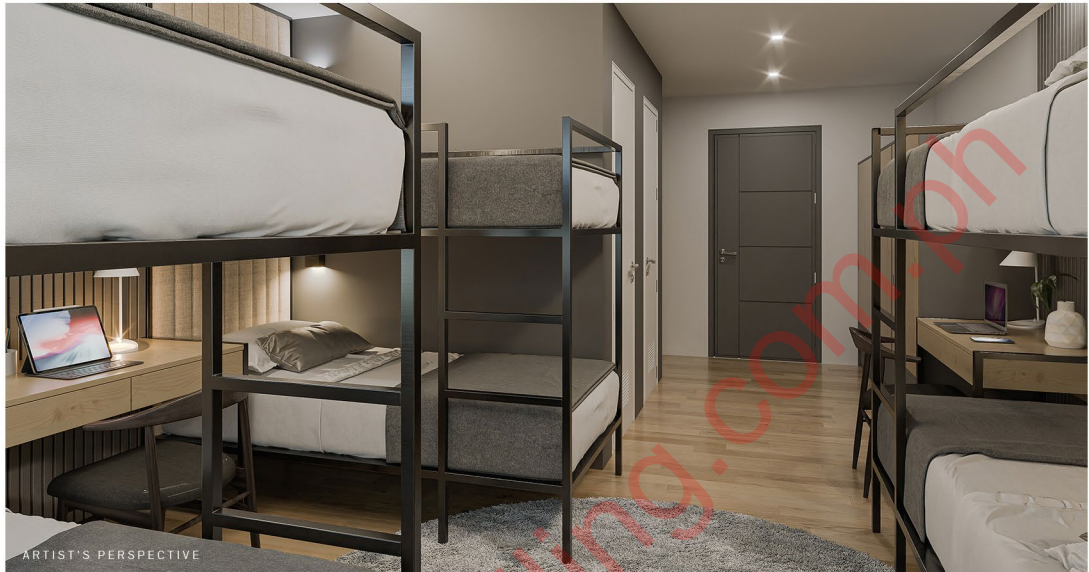




DOUBLE BUNK SUITES

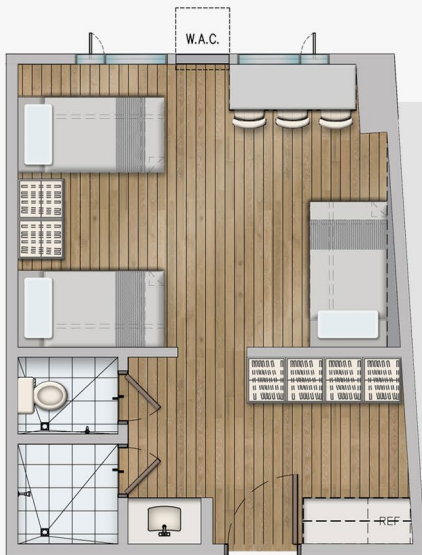
Set up like a dormitory for students, the Double Bunk Suites presents 2 bunk beds in a fully equipped unit.





STANDARD TRIPLE BUNK SUITES

Ideal for closely-knit employees, the Standard Triple Bunk Suites affords the highest occupancy possible with 3 bunk beds in a fully setup unit.



SUPERIOR TRIPLE BUNK SUITES

3 bunk beds complemented by a multi-use table make up the the Superior Triple Bunk Suites, which is ideal for students or employees studying or working from home.





SMART TECH UPGRADES



Fiber-Optic Technology

Built-in infrastructure guarantees ultra-high-speed browsing.



Digital Lockset

Convenient and highly-secured door lockset

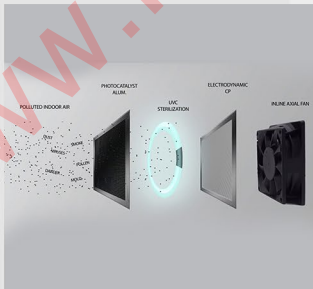
Key Card Access

Exclusive access to floors and shared spaces like the amenities.



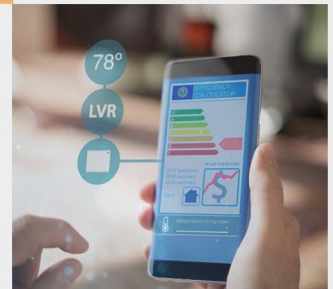
Air Purification System

Modern technology that ensures the cleanest air quality inside the unit.



Online Property Management System

Centralized online system for convenient leasing operation



A COMPLETE BUSINESS MODEL

Nestled at the heart of the Manila Bay Area, Cosmo Suites turns the demand for co-living spaces into a business opportunity.

Surrounded by offices, businesses, and schools, it is a suitable residence for employees, professionals and schooling individuals. With a ready pool of residents in a dynamic environment, investors can reap the benefits of a sustainable passive-income investment.



**KATHRYN
BERNARDO**



ANCHOR LAND
LIFE ANCHORED ON DETAILS

DSHUB LTS NO. 503